
NATIONAL COMMODITY & DERIVATIVES EXCHANGE LIMITED

Circular to all trading and clearing members of the Exchange

Circular No. : NCDEX/TECHNOLOGY-003/2019

Date : February 1, 2019

Subject : Mock Drill and Subsequent Live Trading from DR site

In terms of the provision of Byelaws 8.2.1, 8.4(g) and 8.4(i) of Part A of Exchange Bye law and Regulation 4.1 of the Exchange, members of the Exchange are notified as under:

This is with reference to the Exchange circular no. NCDEX/TECHNOLOGY-077/2017/332 dated December 4 2017, regarding live trading from Disaster Recovery (DR) site, Exchange is pleased to announce mock trading session on Saturday, February 09, 2019. Based on the outcome of the mock, the Exchange will decide to Go-Live with DR Live trading session from Monday, February 11, 2019 till Friday, February 15, 2019 from DR site. The Exchange shall notify the members regarding the decision through a separate circular, by sending broadcast messages on the trading terminal as well as via emails and SMS on Saturday, February 09, 2019 post mock session.

Please note that it is mandatory for all members to actively participate in the mock to ensure that they are able to connect and trade seamlessly from the Exchange's DR Site.

The timings for the DR mock trading session are as follows:

Date	Saturday, February 09, 2019
Pre Open session	08:45 AM - 09:00 AM
Session for Non-Global commodities	09:00 AM – 12:00 PM
Session for Agri-International and Global commodities	09:00 AM – 01:00 PM
Trade modification time for Non-Global	12:00 PM – 12:15 PM
Trade modification time for Agri- International and Global commodities	01:00 PM – 01:15 PM
Re-login session	03:30 PM – 04:00 PM

Members are requested to note that Trades resulting from this session shall not attract any obligation in terms of funds and commodities pay-in / pay-out.

Members are requested to note the following with respect to the mock trading:

- A. Scope of the Mock
 - i. Trading
 - ii. NEXTRA
 - iii. Extranet
 - iv. NCFE
 - v. NCDEX Website
 - vi. Comtrack
 - vii. Repository Application
- B. All Members are requested to go through Annexure 'A' and Annexure 'B' for various options available to connect to the DR Site. This will specify any network configuration changes to be done at the member's end.
- C. Members connecting through CTCL will need to change their configurations at their CTCL server end as per Annexure 'C', in order to connect to the Exchange Trading Server at the DR Site.
- D. Members will need to login to Extranet Site to download their daily files. Refer to Annexure 'D' for details.
- E. Members will need to login to NCFE and perform standard routine exercises to test its availability. Refer to Annexure 'D' for details.
- F. Members connecting through Nextra can refer to Annexure 'E' for DR connectivity details.
- G. Members will need to login to Comtrack and perform standard routine exercises to test its availability. Refer to Annexure 'F' for details.
- H. Members should note the changes in contact numbers and Fax numbers of customer support group for the duration of the **mock trading session**

Department	Contact Number	Fax Number
Customer Support	011 - 6611 4824 011 - 6611 4829 011 - 6611 4830 011 - 6611 4834	011 - 6611 4849

- I. Upon successful completion of DR mock trading session, members are requested to check their configuration for trading through DR site.

J. During DR mock drill, members may access NCDEX website using the URL <https://dr.ncdex.com>

Members are hereby requested to note that for DR mock session, following systems will be unavailable from Saturday, 09th February 2019 04:30 hrs. onwards till 19:00 hrs.

- WebExtranet
- WebNCFE
- Comtrack (E and P)

For and on behalf of
National Commodity & Derivatives Exchange Limited

Nitin Desai
Vice President

Encl: Annexures

For further information / clarifications, please contact

1. Customer Service Group on toll free number: 1800 26 62339
2. Customer Service Group by e-mail to : askus@ncdex.com

Annexure 'A'

1. For Members with P2P:

- Members who have alternate MPLS or VSAT lines to NCDEX can connect to DR site and trade over these lines.
- Members who do not have MPLS or VSAT lines, can connect to the DR Site over Internet through NEXTRA
- Members having **ONLY** P2P mode of connectivity to primary site can connect to DR site using the existing P2P link. **However, Member are requested to note that in the event of actual disaster the P2P link may not be available to members.**

2. For Members with MPLS or VSAT:

- Members do not need to make any changes at their network end.
- Member with Test environment MPLS will be able to trade using test MPLS connectivity.
- Access to test environment will not be available during live trading session. Kindly refer circular NCDEX/TECHNOLOGY-040/2016/273 dated October 14, 2016 for additional details.

3. For Members with Internet:

- Kindly refer annexure 'E' for Nextra setup.

4. Extranet access over Internet VPN.

- Members would need to configure a new connection in their VPN client as detailed in Annexure 'B'.

In addition, members need to make changes in CTCL or NEXTRA applications as detailed Annexures 'C' and 'E' respectively.

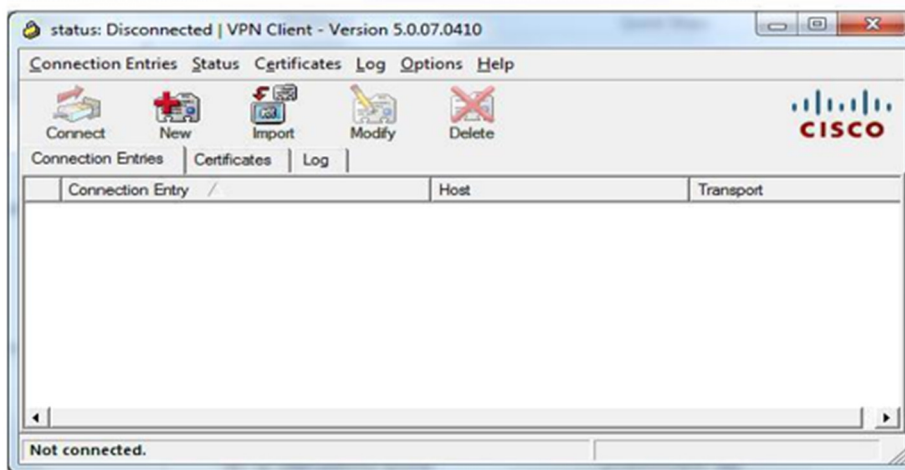
Annexure 'B'

Members trading through Internet

Changes at VPN client:-

Members are required to configure Cisco VPN client to connect to DR site. They will be required to make a new connection entry as per procedure detailed below:

The VPN configuration screen can be obtained by clicking on new button on the VPN Client.



Below is the VPN configuration screen. All the parameters should be added as given below.



-
- Connection Entry: NCDEX-DR
 - Description: Connection to NCDEX DR server at Chennai
 - Host: 103.57.219.66
 - Need to be on Authentication Tab (default).
 - In Group authentication:
 - Name: ncdex
 - Password: Ncdex@123
 - Confirm Password: Ncdex@123
 - Click on save button.

After the VPN configuration has been completed, double click on the connection entry name NCDEX-DR. The new screen for VPN client authentication is introduced, which needs to be filled-in as below:

Username	:	Corporate User Id
Password	:	existing password
Domain	:	vpn

Annexure 'C'

CTCL Members trading through VSAT and MPLS only

Members using CTCL can connect to the DR Site using VSAT and MPLS only.

Gateway	Primary Server IP	Primary Port	Secondary Server IP	Secondary Port
Fix Trading Gateway	172.19.4.27	30507	172.19.4.28	30507
Post Trade Gateway	172.19.4.29	30504	172.19.4.27	30504
Drop Copy Gateway	172.19.4.29	30508	172.19.4.27	30508
FAST Multicast Gateway	239.19.4.27	30540	239.20.4.27	30541
FAST Gateway Replay Channel	172.19.4.27	30520	172.19.4.28	30520
FAST Gateway Snapshot Channel	172.19.4.27	30521	172.19.4.28	30521

Tick By Tick (TBT) broadcast testing

Tick by Tick Trading Market Data for Derivatives segment will be available to members. They can test Tick by Tick (TBT) broadcast by connecting to the TBT gateway through a separate MPLS/P2P connection. Members are requested to use TBT compliant software for connecting to the TBT gateway. However kindly note that in the event of actual disaster the P2P link may not be available to members.

Tick by Tick connection details

Gateway	Primary Server IP	Primary Port	Primary App ID	Secondary Server IP	Secondary Port	Secondary App ID
Tick By Tick Multicast Channel	239.19.4.29	30542	3	239.20.4.29	30543	4
Tick By Tick Replay Channel	172.19.4.29	30522	3	172.19.4.27	30522	4
Tick By Tick Snapshot Channel	172.19.4.29	30523	3	172.19.4.27	30523	4

Annexure 'D'

Details of activities to be performed by members in NCFE and Extranet

- Members are requested to perform the following activities by logging on to NCFE and Extranet. These activities are crucial for daily operations in the event of any disaster.
- User Management including user creation, role management
- Client Module which includes Client Creation/modification/deletion
- Trades Details Tab including Fresh Position Violation, Contract Level OI, Commodity level OI Violation, View Net Position, View Online Trades, Download Trade Details
- TRD Member ID table which includes Changes in Connectivity Type, Change of User Type, User Name, Shift User ID, Create User ID and Delete User ID
- Setting of Collateral Limits through NCFE
- Download files provided by the Exchange through Extranet

The clearing and settlement activities will be done as per the below schedule:

Activities	Timings
Early Pay in	During Trading Hours
Intention Marking	During Trading Hours (if positions are available)
Commodity Pay-in	Cut-off at 11.00 am
Commodity Pay-out	Will be done at 12.00 pm
Buyer Agent Details Updation	Between 12.00 pm To 1.00 pm

Members are hereby informed that the settlement and allocation data as of January 18, 2019 EOD state would be used for the purpose of this mock.

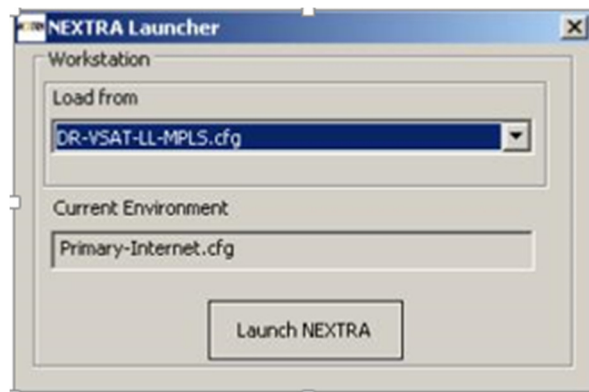
Mode of Connectivity	IP Address at DR Site		
	NCFE	Extranet Member FTP	Extranet Common
Internet (Without VPN)	https://drncfe.ncdex.com/Login/NCFEMain.aspx	NA	http://drcommon.ncdex.com ftp://drextranet.ncdex.com
Internet (VPN)	https://172.19.2.61/Login/NCFEMain.aspx	http://172.19.2.29	NA
VSAT / MPLS	http://172.19.3.61:5223/Login/NCFEMain.aspx	http://172.19.3.29	http://172.19.3.44

Annexure 'E'

Download path for NEXTRA (3.15.1.4) setup for Members trading through VSAT, MPLS and Internet. Installation Steps and DR Nextra IP and Port Details as below:

For VSAT/Leased line/Internet Users

- Log on to Extranet Common mock server with URL –
ftp://drextranet.ncdex.com/common/NCDEXDocuments/NEXTRA/DR
 - Download 'NEXTRA_3.15.1.4.zip' file to your desktop. (If not available).
 - Extract to your desktop. Double click on 'NEXTRA_3.15.1.4.exe' to install.
 - Double Click on 'NEXTRA' icon placed on your desktop to run the application.
 - User will get below Nextra Launcher screen with configuration values. User need to select the respective option based on the user connectivity VSAT or Internet.
1. For DR VSAT and MPLS users - **DR-VSAT-LL-MPLS.cfg**



2. For DR Internet Users - DR-Internet.cfg



Following table can be used to test the connectivity for various modes:-

VSAT / LL / MPLS	IP Address	Port List
DEALER & CORPORATE MANAGER	172.19.16.58 172.19.16.59 172.19.16.60	56000, 64105, 35001 to 35045
ONLINE TRADE BACKUP	172.19.16.58 172.19.16.59	56000, 64102, 64105, 35042

INTERNET	IP Address	Port List
DEALER & CORPORATE MANAGER	103.57.219.42	56000, 64105, 35001 to 35045, 55533
ONLINE TRADE BACKUP	103.57.219.42	56000, 64102, 64105, 35042

Download “Nextra_online_trade_backup” Ver. 1.7.1.0 & “nest_file_uploader” Ver. 2.2.125.0

Members are requested to take backup of the existing version of Nest File Uploader before downloading the DR setup of Nest File Uploader.

Uninstalling Steps for Online Trade Backup.

- **Go to installation path C:\ and delete the folder NEXTRA_Online_Trade_Backup to remove the software.**

From Extranet ISP Server:

- Log on to Extranet Common mock server with URL -
ftp://drextranet.ncdex.com/common/NCDEXDocuments/NEXTRA/DR
- Download nextra_online_trade_backup.1.7.1.0_For_DR.zip
- Download nest_file_uploader.2.2.125.0_Installer.zip

From NCFE:

- Log on to NCFE
- Go to Downloads→Download Files→NEXTRA→DR
- Download nextra_online_trade_backup.1.7.1.0_For_DR.zip
- Download nest_file_uploader.2.2.125.0_Installer.zip

Extract to your desktop.

- Go to folder→nest_file_uploader.2.2.125.0_Installer
- Go to →2.2.125.0→ nt5.0--> bin
- Double click on →nest_file_uploader_setup.2.2.125.0.exe and install.

After Installation copy the config files from “\nest_file_uploader.2.2.125.0_Installer\2.2.125.0\nt5.0\bin” to the installed folder location depending upon the mode of connectivity viz. DR Internet or DR VSAT.

Steps for nextra_online_trade_backup

Members are requested to take backup of the existing version of nextra_online_trade_backup before downloading the DR setup of nextra_online_trade_backup.

For VSAT/Leased line Users

- Download 'nextra_online_trade_backup.1.7.1.0_For_DR.zip' file to your desktop.
- Extract to your desktop.
- Go to folder→nextra_online_trade_backup.1.7.1.0_For_DR
- Go to → NT5.0→bin
- Double click on setup exe to install
- Double click on the icon created on desktop NEXTRA_Online_Trade_Backup

After installation, copy the config files from "**nextra_online_trade_backup.1.7.1.0_For_LAN\nt5.0\bin**" to the installed folder location depending upon the mode of connectivity viz. DR Internet or DR VSAT

Annexure 'F'

Details of activities to be performed by users of Comtrack (CMSE only)

Comtrack Users are requested to perform the following activities by logging on to Comtrack. These activities are crucial for settlement in the event of any disaster

❖ Comtrack Participant functionality

- Client to Pool
- Ownership Transfer
- Client Creation
- Transfer CMSE to CMSP
- Pledge Initiation

Repository Users are requested to perform the following activities by logging on to Repository system

- Client to Pool
- Pool to Client

Link to access DR Comtrack-E system during DR mock drill is – <https://dr.comtrack.in>

Link to access DR Comtrack-P system during DR mock drill is – <https://pdr.comtrack.in>

Link to access repository application during DR mock drill is – <https://mock.erepository.in>